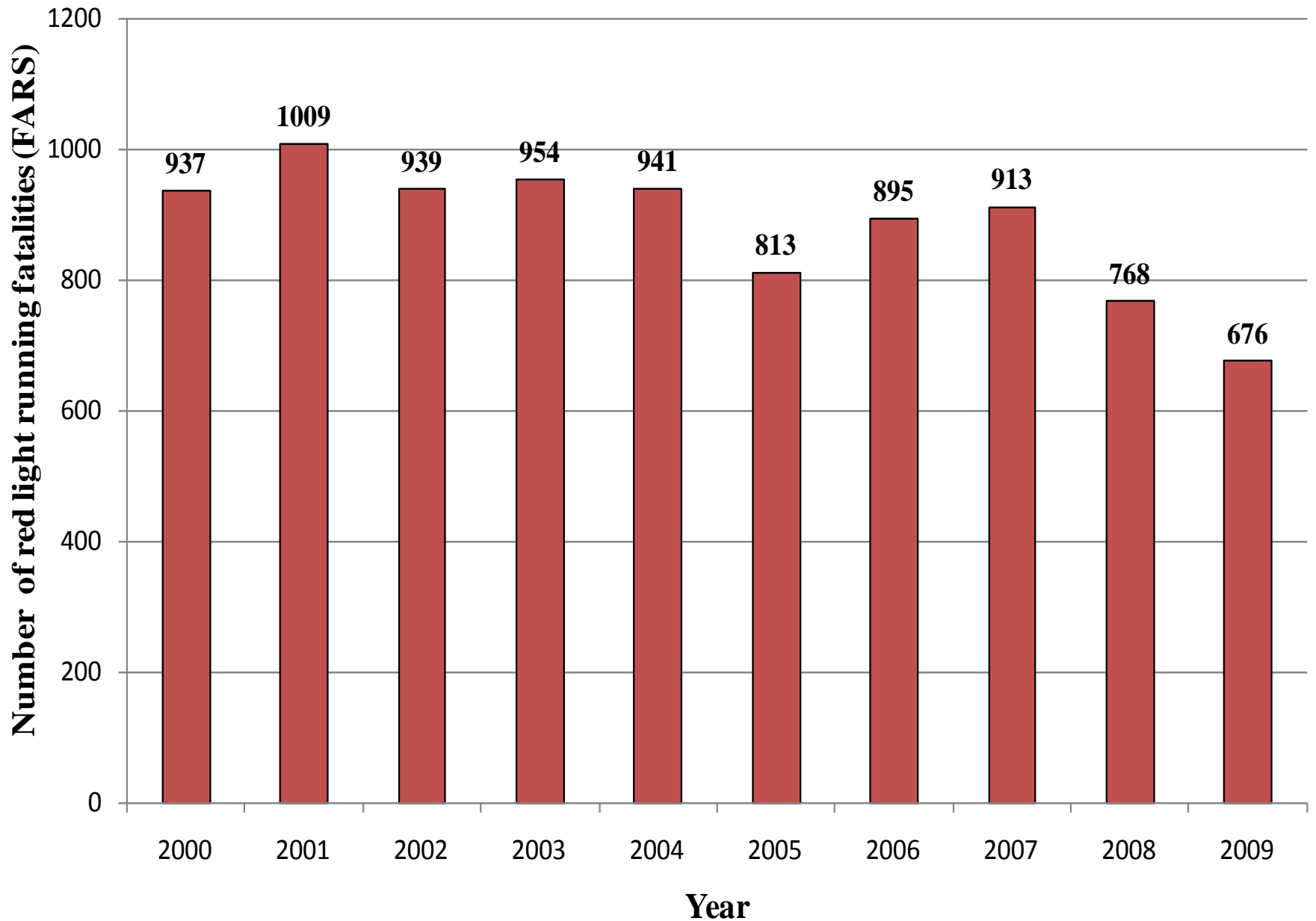


## Red Light Running Fatalities in the United States (2000-2009)

Year	Red light running fatalities*
2000	937
2001	1009
2002	939
2003	954
2004	941
2005	813
2006	895
2007	913
2008	768
2009	676

\* Fatality Analysis Reporting System (FARS)

# Red Light Running Fatalities in the United States (2000-2009)



# Proportions of Red Light Running Fatalities to Total Fatalities in the United States (2000-2009)

Year	Red Light Running (RLR) Fatalities*	Total Fatalities	Intersection Fatalities	Proportion of RLR fatalities/ Total fatalities	Proportion of RLR fatalities/ Intersection fatalities
2000	937	41,945	8,689	0.022	0.108
2001	1009	42,196	8,922	0.024	0.113
2002	939	43,005	9,273	0.022	0.101
2003	954	42,884	9,362	0.022	0.102
2004	941	42,836	9,176	0.022	0.103
2005	813	43,510	9,238	0.019	0.088
2006	895	42,708	8,850	0.021	0.101
2007	913	41,259	8,703	0.022	0.105
2008	768	37,423	7,809	0.021	0.098
2009	676	33,808	7,043	0.020	0.096

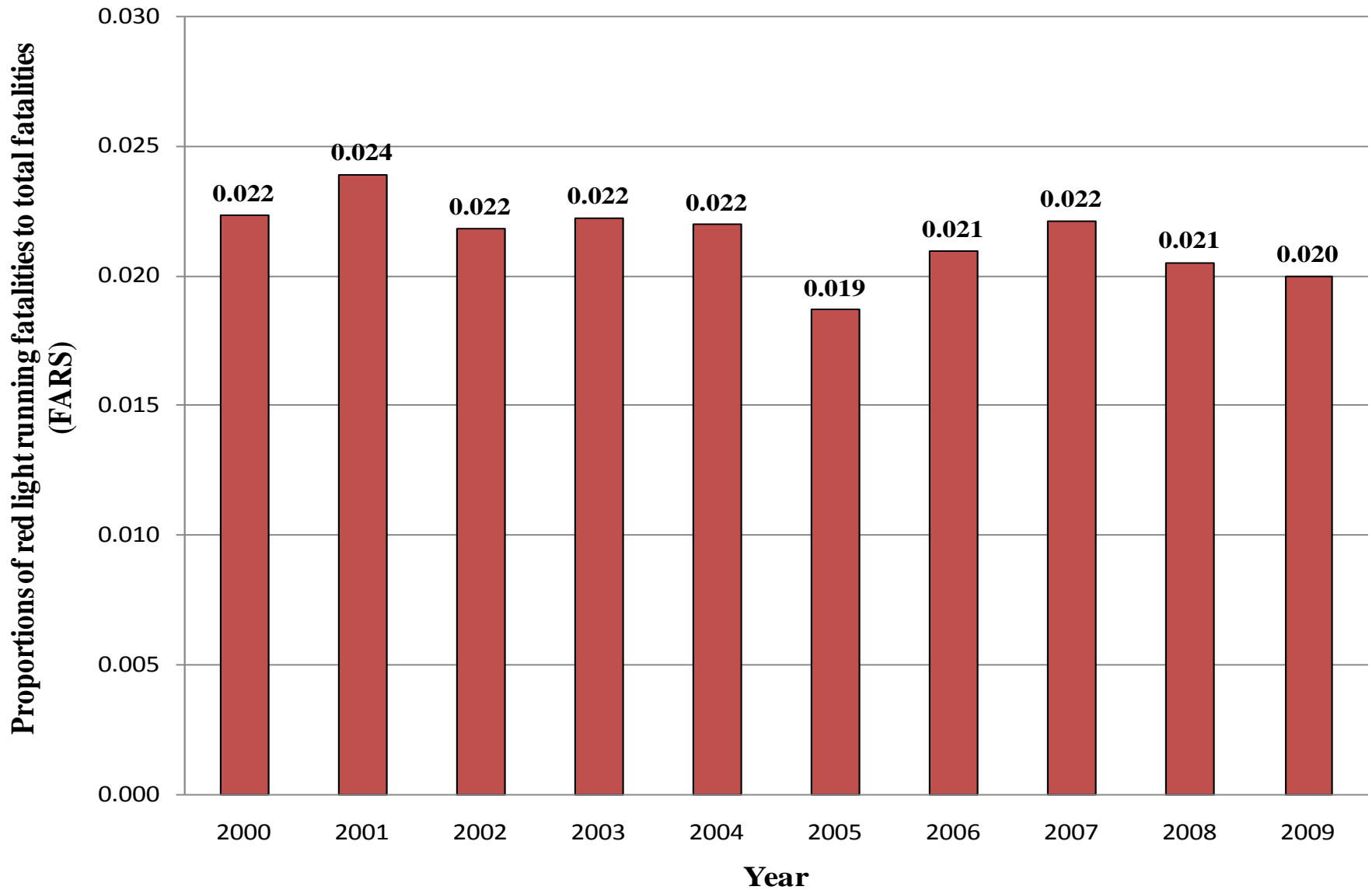
## •Fatality Analysis Reporting System (FARS)

### NOTES:

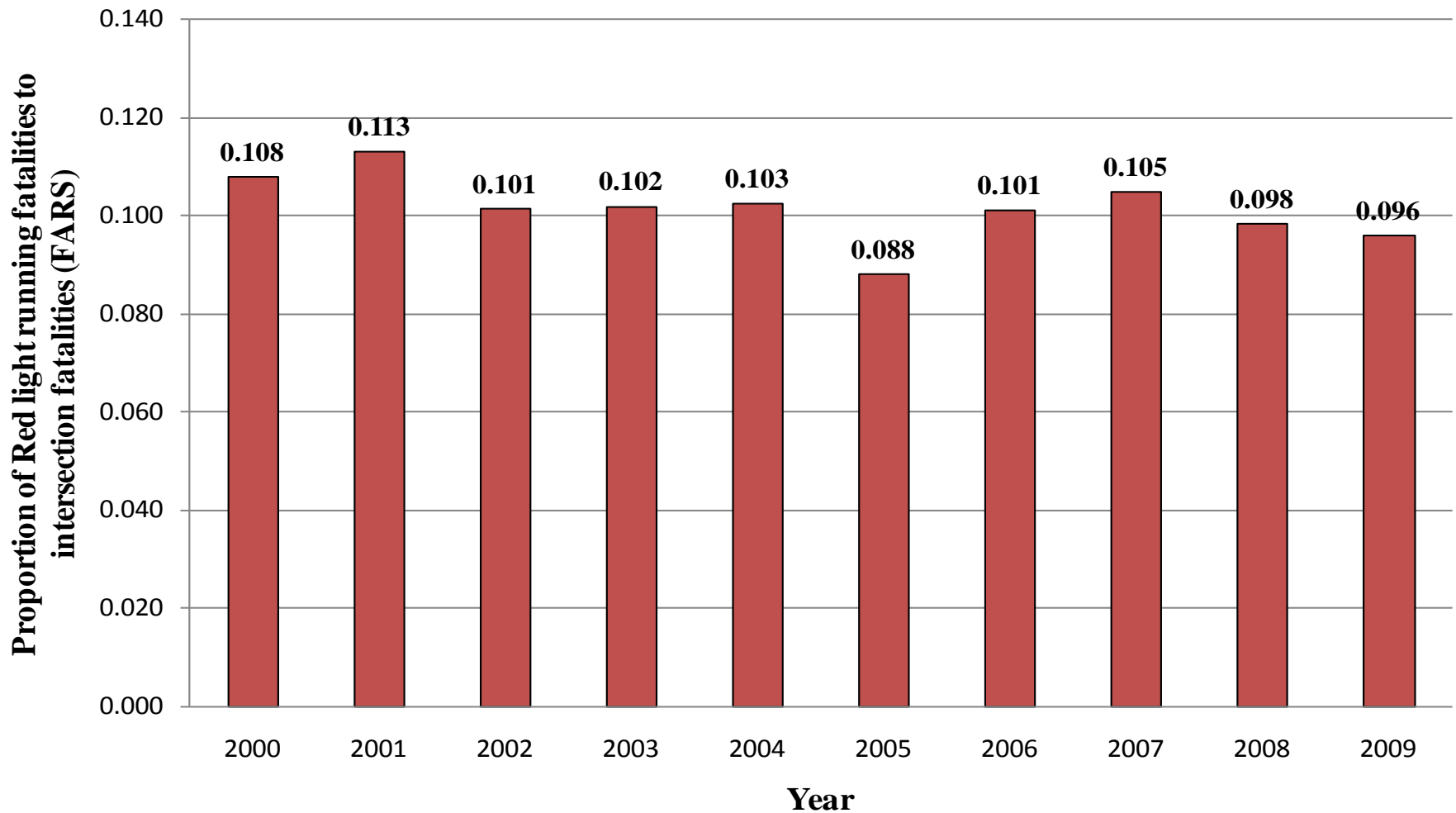
•RLR intersection fatalities include FARS "Relation to Junction" attributes 2) intersection (non-interchange), 3) intersection related (non-interchange), and 4) driveway, alley access, etc. (non-interchange).

•Intersection fatalities include FARS "Relation to Junction" attributes 2) intersection (non-interchange) and 3) intersection related (non-interchange).

# Proportions of Red Light Running Fatalities to Total Fatalities in the United States (2000-2009)



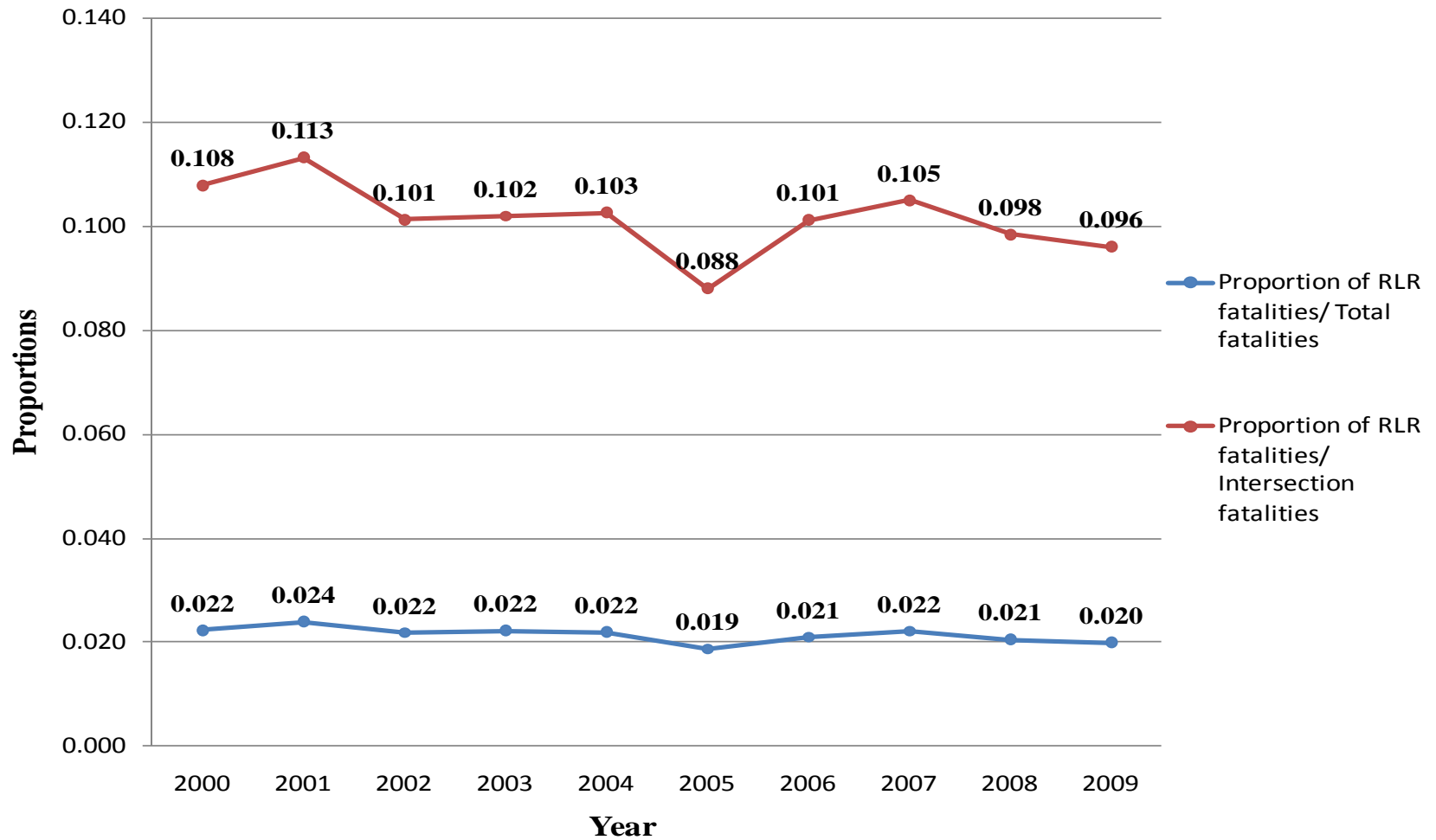
# Proportions of Red Light Running Fatalities to Intersection Fatalities in the United States (2000-2009)



**NOTES:**

- RLR intersection fatalities include FARS "Relation to Junction" attributes 2) intersection (non-interchange), 3) intersection related (non-interchange), and 4) driveway, alley access, etc. (non-interchange).
- Intersection fatalities include FARS "Relation to Junction" attributes 2) intersection (non-interchange) and 3) intersection related (non-interchange).

# Proportions of both Red Light Running Fatalities to Total Fatalities and Red Light Running Fatalities to Intersection Fatalities in the



**NOTES:**

- RLR intersection fatalities include FARS “Relation to Junction” attributes 2) intersection (non-interchange), 3) intersection related (non-interchange), and 4) driveway, alley access, etc. (non-interchange).
- Intersection fatalities include FARS “Relation to Junction” attributes 2) intersection (non-interchange) and 3) intersection related (non-interchange).